



INSULATED  
METAL  
PANELS

# COMMERCIAL & INDUSTRIAL

PRODUCT SHOWCASE



# TABLE OF CONTENTS

|  |       |
|--|-------|
| <b>INDUSTRY LEADER</b>                     | 2     |
| <b>WHY INSULATED METAL PANELS</b>          | 4     |
| <b>WHAT WE'VE DONE</b>                     | 6     |
| <b>OUR PRODUCTS</b>                        | 10-21 |
| <b>ENVELOPE &amp; ACCESSORY COMPONENTS</b> | 22-23 |
| <b>TESTING &amp; CERTIFICATIONS</b>        | 24    |
| <b>DESIGN OPTIONS</b>                      | 25    |
| <b>SINGLE SKIN PRODUCTS</b>                | 26-29 |





PROJECT: KETTLE CUISINE



# INDUSTRY LEADER

## INSULATED METAL PANELS

PROJECT: GODFREY HOTEL



## METL-SPAN DELIVERS HIGH-QUALITY, DURABLE AND ENERGY-EFFICIENT SOLUTIONS DESIGNED FOR UNPARALLELED PERFORMANCE TO STAND THE TEST OF TIME.

Metl-Span is a dynamic industry innovator dedicated to manufacturing and providing the highest quality insulated building panel products. Since our origination in 1968, we have been pioneers in research, design, production and sale of state-of-the-art insulated metal panels for institutional, commercial, industrial and cold storage buildings.

We are a championship team that creates great building solutions and achieves proven performance by delivering on our core values and demonstrating our key attributes. Metl-Span ensures you will remain on-time and on-budget with your building projects through our unmatched customer service. Because our employees understand your needs and are committed to your success, we provide you with the tools needed to incorporate our insulated panels into virtually any building design.



# WHY INSULATED METAL PANELS (IMPs)

## FEATURES & BENEFITS

### MATERIALS

Metl-Span panels are comprised of an advanced urethane core\* that is injected between two pre-finished steel facings, forming a single, all-in-one unit. The result is the most thermally efficient panel available. Wall panels also have a specially formed barrier-side joint that permits the hidden application of vapor sealant within recessed grooves, creating an impenetrable water and vapor seal that is protected from the effects of extreme weather.

### TIME

Metl-Span panels offer a single source for the building envelope enclosure, reducing construction time and the number of trades needed for building assembly to save you money and effort.

### LABOR COSTS

Insulated metal panels are designed for easy and efficient installation in order to reduce unnecessary downtime and keep your project on track.

Insulated metal panels reduce additional labor trades needed for building erection, and address thermal, vapor, air and moisture barriers in one product.

### ENERGY EFFICIENCY

Each insulated metal panel contains an advanced urethane core\* that provides highly efficient insulation to drive down building energy usage and overall costs.

### GLOBAL FOOTPRINT

Metl-Span strives to offer production dates determined by customer needs, not manufacturer convenience. With manufacturing locations across the United States and Canada, Metl-Span offers faster service to our customers and reduced transportation costs.

### GREEN STANDARDS

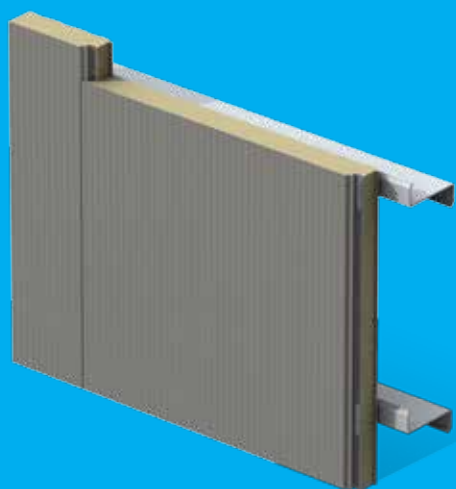
Metl-Span panels are sustainably constructed, qualifying many buildings for credits in the Leadership in Energy and Environmental Design (LEED®) Rating System.

\*ThermalSafe panels are comprised of mineral wool, which provides fire-rating capabilities.

# COMPARISON

One Step to Code Compliance: IMPs create the perfect envelope solution in one easy step compared to traditional built-up methods.

## INSULATED METAL PANELS

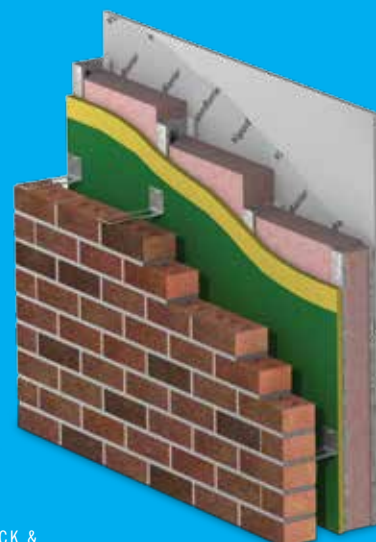


INSULATED METAL  
PANEL WALL

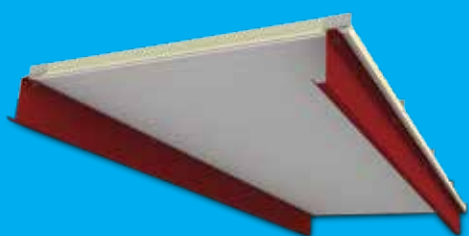
## TRADITIONAL BUILT-UP METHODS



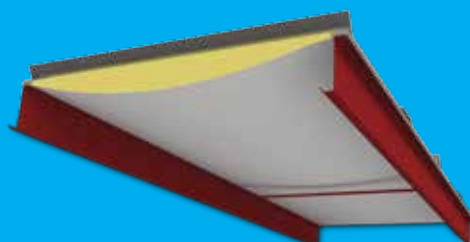
SINGLE LAYER  
BAG 'N SAG WALL



BRICK &  
MASONRY WALL



INSULATED METAL  
PANEL ROOF



SINGLE LAYER  
BAG 'N SAG ROOF



CAVITY FILLED  
BAG 'N SAG ROOF

# WHAT WE'VE DONE

## A LOOK AT OUR WORK

From educational structures to public facilities, recreational buildings and the retrofit of outdated buildings into new spaces, Metl-Span creates insulated metal panels to help make your dreams a reality. Take a look at some of our recent projects to see how you can incorporate insulated metal panels into your wall and/or roof system to achieve the design aesthetics and energy efficiency required.



PROJECT: HOPE LAKE LODGE











PROJECT: TWIN RINKS



PROJECT: DAVIDSON CENTER



PROJECT: GODFREY HOTEL



PROJECT: HITCHINER



PROJECT: POLY PREP HIGH SCHOOL

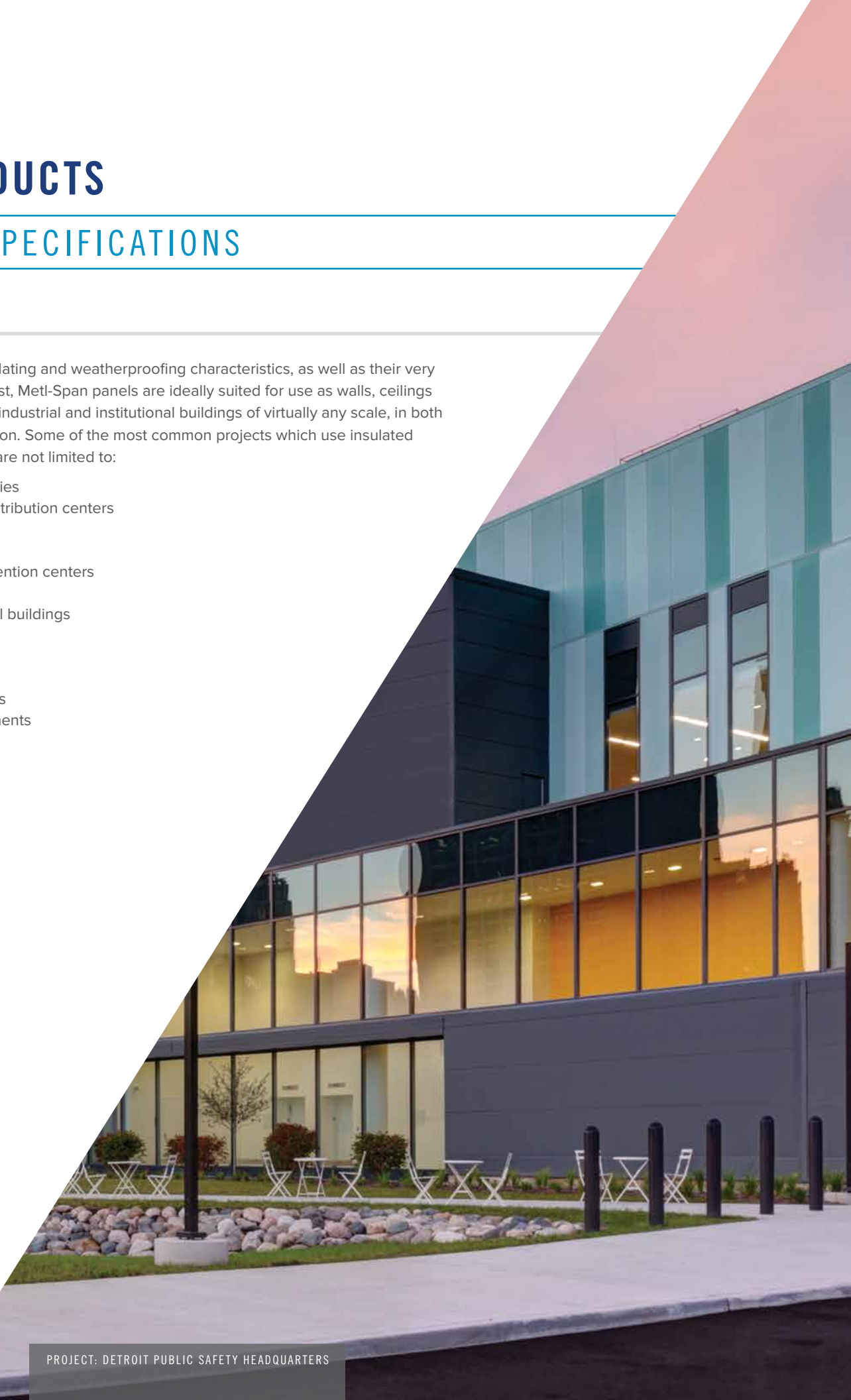
# OUR PRODUCTS

## PRODUCT SPECIFICATIONS

### APPLICATIONS

Due to their excellent insulating and weatherproofing characteristics, as well as their very competitive installation cost, Metl-Span panels are ideally suited for use as walls, ceilings and roofs for commercial, industrial and institutional buildings of virtually any scale, in both new and retrofit construction. Some of the most common projects which use insulated metal panels include, but are not limited to:

- Manufacturing facilities
- Warehouses and distribution centers
- Schools
- Sports complexes
- Museums and convention centers
- Corporate offices
- Banks and municipal buildings
- Retail locations
- Aircraft hangars
- Service facilities
- Government facilities
- Controlled environments

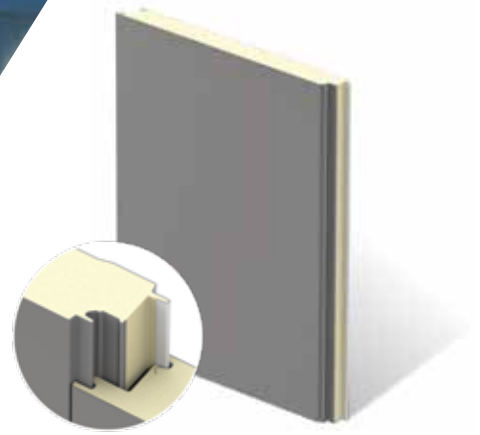


PROJECT: DETROIT PUBLIC SAFETY HEADQUARTERS









## FLAT

### CF ARCHITECTURAL

The Metl-Span CF Architectural insulated metal panel is ideal for high-profile architectural applications with its flat, monolithic look. The panels are designed to be installed vertically or horizontally with concealed clips and fasteners in the side joint. Architectural wall panels provide a beautiful, flush appearance, allowing architects flexibility with design.

#### PANEL SPECIFICATIONS

**Width:** 24", 30", 36"

**Thickness:** 2", 2½", 3", 4"

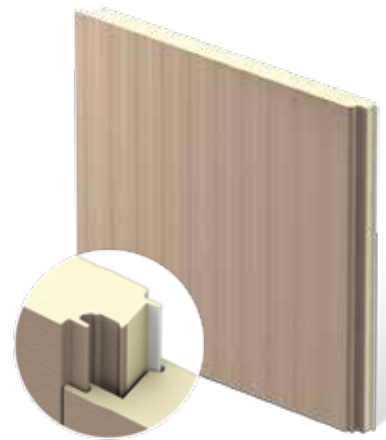
**Length:** 8'0" to 32'0"

**Exterior Face:** Stucco-embossed, G-90 galvanized and/or AZ-50 aluminum-zinc coated steel in 22 Ga. Optional smooth-unembossed finish.

**Interior Face:** Light Mesa profile, stucco-embossed, G-90 galvanized, and/or AZ-50 aluminum-zinc coated steel in 26, 24 and 22 Ga.

**Joint:** Offset double tongue-and-groove with extended metal shelf for positive face fastening

**Reveal:** Up to 1" reveal options in ¼" increments or up to 3" reveal options in ½" increments



## PROFILED

### CF STRIATED

The Metl-Span CF Striated insulated metal panel is an attractive alternative to typical flat wall panels. The exterior face is lightly profiled with narrow longitudinal striations, which create a subtle shadow effect but exhibit a virtually flat appearance from a short distance away. The Striated wall panel is an exceptional value, combining the aesthetics of a flat wall panel with the high insulation ratings of a polyurethane core.

#### PANEL SPECIFICATIONS

**Width:** 24"\* , 30", 36", 42"

**Thickness:** 2", 2½", 2¾"\*, 3", 4"

**Length:** 8'-0" to 40'-0" for the 30" & 36" widths, 8'-0" to 32'-0" for the 42" width

**Exterior Face:** Stucco-embossed, G-90 galvanized and/or AZ-50 aluminum-zinc coated steel in 24 and 22 Ga. Optional smooth-unembossed finish.

**Interior Face:** Light Mesa profile, stucco-embossed, G-90 galvanized and/or AZ-50 aluminum-zinc coated steel in 26, 24 and 22 Ga.

**Joint:** Offset double tongue-and-groove with extended metal shelf for positive face fastening

### CF MESA

The Metl-Span CF Mesa insulated metal panel is well suited for exterior and interior walls and ceiling applications. The lightly corrugated profile on both faces creates symmetry on the outside of the building and room to room within. The minor rib provides a flattened appearance. Mesa panels are ideal for commercial, institutional and industrial applications.

#### PANEL SPECIFICATIONS

**Width:** 30", 36", 42"

**Thickness:** 2", 2½", 3", 4", 5", 6"

**Length:** 8'-0" to 53'-0"

**Exterior Face:** Stucco-embossed, G-90 galvanized and/or AZ-50 aluminum-zinc coated steel in 26, 24 and 22 Ga.

**Interior Face:** Stucco-embossed, G-90 galvanized and/or AZ-50 aluminum-zinc coated steel in 26, 24 and 22 Ga.

**Joint:** Offset double tongue-and-groove with extended metal shelf for positive face fastening

### CF LIGHT MESA

The Metl-Span CF Light Mesa insulated metal panel is well suited for exterior and interior walls and ceiling applications. The shallower version of the Mesa profile creates symmetry on the outside of the building and room to room within. The minor rib provides a flattened appearance. Light Mesa panels are ideal for commercial, institutional and industrial applications.

#### PANEL SPECIFICATIONS

**Width:** 30", 36", 42"

**Thickness:** 2", 2½", 3", 4"

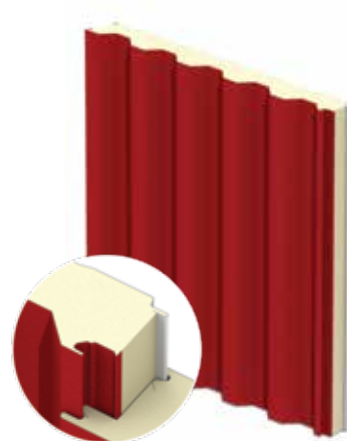
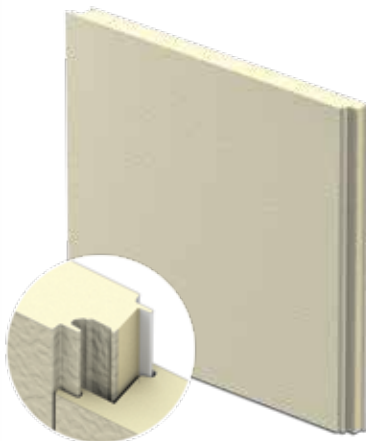
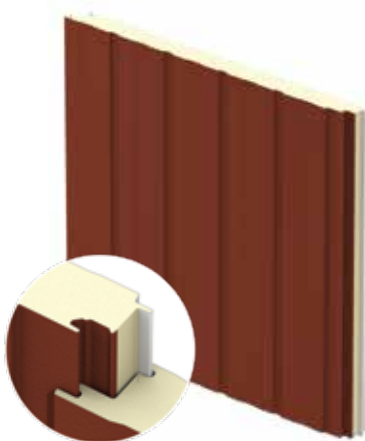
**Length:** 8'-0" to 53'-0"

**Exterior Face:** Stucco-embossed, G-90 galvanized and/or AZ-50 aluminum-zinc coated steel in 26, 24 and 22 Ga.

**Interior Face:** Stucco-embossed, G-90 galvanized and/or AZ-50 aluminum-zinc coated steel in 26, 24 and 22 Ga.

**Joint:** Offset double tongue-and-groove with extended metal shelf for positive face fastening

\*Available only from Nevada plant



## PROFILED CONTINUED

### CF FLUTE

The ribbed profile of the Metl-Span CF Flute insulated metal panel provides bold vertical lines complementary to almost any commercial or industrial building. The bold vertical lines create a distinctive and visually appealing architectural and industrial image.

#### PANEL SPECIFICATIONS

**Width:** 42"

**Thickness:** 2", 2½", 2¾", 3", 4", 5", 6"

**Length:** 8'-0" to 53'-0"

**Exterior Face:** Stucco-embossed, G-90 galvanized and/or AZ-50 aluminum-zinc coated steel in 26, 24 and 22 Ga.

**Interior Face:** Mesa profile, Light Mesa profile, stucco-embossed, G-90 galvanized and/or AZ-50 aluminum-zinc coated steel in 26, 24 and 22 Ga.

**Joint:** Offset double tongue-and-groove with extended metal shelf for positive face fastening

### CF SANTA FE

The Metl-Span CF Santa Fe panel has a flat exterior profile with a heavy, embossed stucco texture that mimics the look of a masonry stucco finish but with the added value of an insulated metal panel. The profile is flush with the warmness of an old-world finish, providing a visually pleasing building.

#### PANEL SPECIFICATIONS

**Width:** 24"\*, 30"\*, 36", 42"

**Thickness:** 2", 2½", 2¾", 3", 4"

**Length:** 8'-0" to 40'-0"

**Exterior Face:** Heavy stucco-embossed, G-90 galvanized and/or AZ-50 aluminum-zinc coated steel in 24 and 22 Ga.

**Interior Face:** Light Mesa profile, stucco-embossed, G-90 galvanized and/or AZ-50 aluminum-zinc coated in 26, 24 and 22 Ga.

**Joint:** Offset double tongue-and-groove with extended metal shelf for positive face fastening

**Reveal:** Up to 1" reveal options in ¼" increments or up to 3" reveal options in ¼", ½", ¾" and 1" increments

### CF 7.2 INSUL-RIB

The CF 7.2 Insul-Rib insulated metal panel combines a traditional 7.2 rib panel with a premier polyurethane insulated core. With a bold, ribbed pattern, this panel creates a unique architectural or industrial image. The 7.2 Insul-Rib panel can be installed both vertically and horizontally, allowing architects flexibility with design.

#### PANEL SPECIFICATIONS

**Width:** Nominal 36"

**Thickness:** 2½", 3", 4", 5", 6"

**Length:** 8'-0" to 36'-0"

**Exterior Face:** Stucco-embossed, G-90 galvanized and/or AZ-50 aluminum-zinc coated steel in 26, 24 and 22 Ga.

**Interior Face:** Mesa profile, Light Mesa profile, stucco-embossed, G-90 galvanized and/or AZ-50 aluminum-zinc coated steel in 26, 24 and 22 Ga.

**Joint:** Offset double tongue-and-groove with extended metal shelf for positive face fastening

\*Available only from Nevada plant

\*Measured to top of rib







## INTERIOR PARTITION

### CF PARTITION

The CF Partition insulated metal panel is designed to be the most economical choice for interior partition applications. The lightly corrugated profile provides added strength on both faces and ensures symmetry from the exterior to the interior of the building, and between rooms.

#### PANEL SPECIFICATIONS

**Width:** 44½"

**Thickness:** 2", 2½", 2¾", 3", 4", 5", 6"

**Length:** 8'-0" to 53'-0"

**Exterior Face:** Stucco-embossed, G-90 galvanized and/or AZ-50 aluminum-zinc coated steel in 26, 24 and 22 Ga. Optional smooth-unembossed finish

**Interior Face:** Mesa profile, Light Mesa profile, stucco-embossed, G-90 galvanized and/or AZ-50 aluminum-zinc coated steel in 26, 24 and 22 Ga.

**Joint:** Offset double tongue-and-groove (the extended metal shelf is eliminated on the Partition wall panel)

## FIRE RESISTANCE

### THERMALSAFE® & THERMALSAFE NON-EXPOSED FASTENER (NEF)

The ThermalSafe insulated metal panel combines advanced design with Metl-Span's sophisticated manufacturing expertise to create a composite panel with a core made from non-combustible structural mineral wool boards processed to maximize compressive strength. This fire-rated panel has superior structural characteristics and span capability.

See Testing & Certifications page 24 for fire-resistance ratings.

#### PANEL SPECIFICATIONS

**Width:** 42"

**Thickness:** Nominal 3"†, 4", 5", 6", 7", 8"

**Length:** 8'-0" to 40'-0", variable by thickness; contact Metl-Span for exact maximum length for each thickness

**Exterior Face and Profile:** Ultra-Light Mesa nominal ½" with stucco embossing or Santa Fe profile with heavy stucco embossing, G-90 galvanized and/or AZ-50 aluminum-zinc coated steel in 26 and 24 Ga.

**Interior Face and Profile:** Ultra-Light Mesa nominal ½" with stucco embossing

**Weight, 26 Ga. Faces:** 4" is 4.65 PSF, 5" is 5.49 PSF, 6" is 6.21 PSF, 7" is 6.92 PSF, 8" is 7.63 PSF

**Joint:** Exclusive LockGuard® side joint has a flush, double tongue-and-groove connection of the metal faces with an advanced integral spine to join the mineral wool core

**Core:** Non-combustible, rigid mineral wool lamellas. Mineral wool fibers are oriented perpendicular to the panel faces for maximum structural strength.

**Thermal Values:** K-Factor\*\* @ 75° F (24° C) is 0.275

**R-Value:** The core insulating properties are 3.61 "R" per inch

**Fastening:** Available with either through-fastening across the width of the panel to the support framing or non-exposed fastening (NEF) by securing through the back of the panel for a flush visual appearance

Consult fire-resistant listings for fastener types and spacing. Fastening patterns may vary depending on specific windload and fire-resistant requirements.

\*Available only from Nevada plant

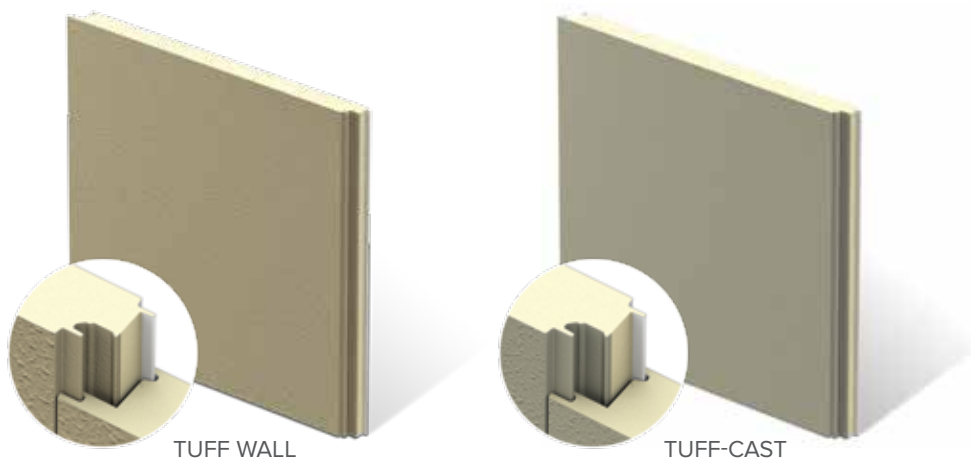
\*\*K-Factor calculations: Btu in/ft²hr. °F

†No hourly rating available









## TUFF COTE® WALL PANELS

### CF TUFF WALL

The Metl-Span CF Tuff Wall is an attractive, stucco-like insulated metal panel that exhibits the natural beauty sought by many designers and owners. The exterior surface of the panel is a hard aggregated, fiber-reinforced polymer coating created with the factory-applied Tuff Cote® finish system. Tuff Cote® finish offers an extremely durable, impact- and abrasion-resistant coating that can withstand severe weather conditions.

Unlike field-applied finishes that are vulnerable to damp or cold weather during installation, Tuff Wall panels can be erected in virtually any weather condition. The interior face of the Tuff Wall panel is finished with an attractive Light Mesa profile and painted with a White Polyester coating.

### CF TUFF-CAST

The Metl-Span CF Tuff-Cast is an attractive insulated metal panel with the appearance of finished precast concrete. The exterior surface of the panel is a hard aggregated fiber-reinforced polymer coating created with the factory-applied Tuff Cote® finish system. Tuff Cote® finish offers an extremely durable, impact- and abrasion-resistant coating that can withstand severe weather conditions.

Unlike field-applied finishes which are vulnerable to damp or cold weather during installation, Tuff-Cast panels can be erected in virtually any weather condition. The interior face of the Tuff-Cast panel is finished with an attractive Light Mesa profile and painted with a White Polyester coating.

### PANEL SPECIFICATIONS

**Width:** 36", 42"

**Thickness:** 2", 2½", 3", 4", 5", 6"

**Length:** 8'-0" to 40'-0"

**Exterior Face:** Stucco-embossed, G-90 galvanized and/or AZ-50 aluminum-zinc coated steel in 24 and 22 Ga. with factory-applied Tuff Cote® finish system

**Interior Face:** Stucco-embossed, G-90 galvanized and/or AZ-50 aluminum-zinc coated steel in 26, 24 and 22 Ga.

**Joint:** Offset double tongue-and-groove with extended metal shelf for positive face fastening

**Exterior Profile:** 2", 2½", 3" and 4" are no profile with Tuff Cote® finish system; 5" and 6" are Mesa nominal ⅛" deep with Tuff Cote® finish system

**Interior Profile:** Light Mesa nominal ⅛" deep

**Core:** Foamed-in-place, Non-CFC & zero ODP polyurethane, FM Approved Class 1 with no height restrictions

**Thermal Values:** K-Factor\*\* @ 75° F (24° C) is 0.14, @ 40° F (4° C) is 0.126

**Exterior Texture:** Tuff Cote® finish system—a hard aggregated fiber-reinforced polymer coating

**Fastening:** Fastener and clip concealed in the side joint

\*\*K-Factor calculations: Btu in/ft²hr. °F



## WALL & CEILING SYSTEM

### FRP CLEANSEAM™

The FRP CleanSeam insulated metal panel is designed to create a virtually seamless joint between wall and ceiling to prevent mold and mildew growth. This panel is a perfect solution for commissaries, clean rooms or pharmaceutical manufacturing facilities where frequent scrub downs may occur. The virtually maintenance-free, two-part welded seal system creates a permanent bond—unlike silicone or urethane sealants, which can deteriorate under rigorous cleanings.

#### PANEL SPECIFICATIONS

**Width:** 42", 44½"

**Thickness:** 2", 2½", 3", 4", 5", 6"

**Length:** 8'-0" to 32'-0"

**Finish:** 0.075" thick, Class A, smooth FRP

**Substrate:** No-profile G-90 galvanized pre-painted steel available in 26, 24 and 22 Ga.

**Finish Option:** In lieu of FRP finish, one of the faces is available in a Mesa or Light Mesa profile with USDA-compliant polyester coating, Igloo White color

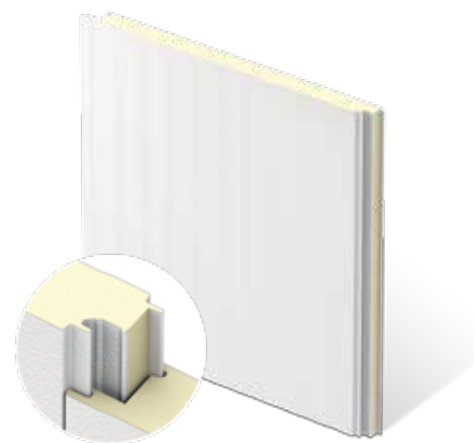
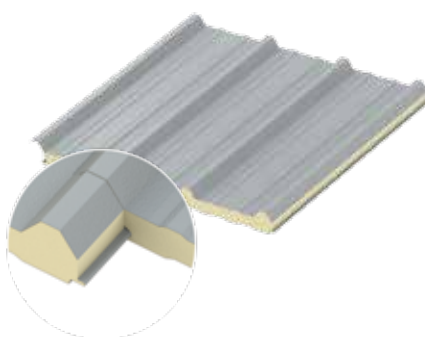
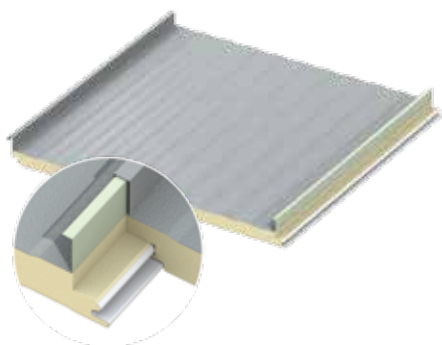
**CF Joint:** Offset double tongue-and-groove

**FRP Joint Sealant:** Two-part compound which chemically welds FRP surfaces for a smooth, durable finish—virtually maintenance-free method to prevent water penetration

**Core:** Foamed-in-place, zero ozone-depleting (zero ODP) Class 1 foam

**Thermal Value:** K-Factor\*\* @ 75° F (24° C) is 0.140, @ 40° F (4.4° C) is 0.126

\*\*K-Factor calculations:  
Btu in/ft²hr. °F



## ROOF

### CFR

Developed as the preeminent innovation in all-in-one composite panel design, this standing seam roof panel combines durable interior and exterior faces with our unmatched polyurethane core.

#### PANEL SPECIFICATIONS

**Width:** 30", 36", 42"

**Thickness:** 2", 2½", 3", 4", 5", 6"

**Length:** 9'-6" to 53'-0"; contact Metl-Span for custom length availability

**Exterior Face:** Stucco-embossed, G-90 galvanized and/or AZ-50 aluminum-zinc coated steel in 24 and 22 Ga.; or AZ-55 aluminum-zinc coated steel with a clear acrylic coating in 24 Ga.

**Interior Face:** Stucco-embossed, G-90 galvanized and/or AZ-50 aluminum-zinc coated steel in 26, 24 and 22 Ga.

**Joint:** Mechanically seamed singlelock standing seam at the exterior side joint. The interior side joint is a single tongue-and-groove interlock.

**Exterior Profile:** 2" high standing seam with a Mesa profile between the seams

**Interior Profile:** Mesa profile, nominal ⅛" deep

**Uplift Performance:** UL 90 rated, FM Approvals Standard 4471, and Florida Building Code approved. Dade County NOA.

### LS-36

The LS-36 insulated metal panel provides versatility with design options while also attaining unmatched insulation values. The overlapping, through-fastened joint allows for quick installation in roof or wall applications, which results in reduced labor costs and earlier business starts. Additionally, the insulation within the panel aids in energy cost savings.

#### PANEL SPECIFICATIONS

**Width:** 36"

**Thickness:** 1½", 2", 2½", 3", 4", 5", 6"

**Length:** 8'-0" to 50'-0"

**Exterior Face:** Stucco-embossed, G-90 galvanized and/or AZ-50 aluminum-zinc coated steel in 26, 24 and 22 Ga.

**Interior Face:** Stucco-embossed, G-90 galvanized and/or AZ-50 aluminum-zinc coated steel in 26, 24 and 22 Ga.

**Joint:** Overlapping with a single tongue-and-groove

**Exterior Profile:** 1¼" high major ribs at 12" on center with Mesas in between ribs at 4" on center

**Interior Profile:** Mesa profile, nominal ⅛" deep

**Fastening:** Exposed through fasteners

**Uplift Performance:** FM Approvals Standard 4471

## SINGLE-PANEL COMPONENT

### HPCI BARRIER

The HPCI Barrier insulated metal panel provides superior air, water, thermal and vapor protection in a single-panel component. This unique insulated metal wall panel introduces new standards in cost savings, design integrity and sustainability. Easily and quickly installed in a single step, the HPCI Barrier eliminates the need for multiple work crews, minimizing construction debris and reducing the likelihood of improper installation.

#### PANEL SPECIFICATIONS

**Width:** 42"

**Thickness:** 2", 3", 4", 5", 6"

**Length:** 8'-0" to 24'-0"; contact Metl-Span for longer length options

**Exterior & Interior Face:** Stucco-embossed, G-90 galvanized and/or AZ-50 aluminum-zinc coated steel in 26 Ga.

**Core:** Foamed-in-place, zero ozone-depleting polyurethane (zero ODP)

**Thermal Value:** K-Factor\*\* @ 75° F (24° C) is 0.140

**Exterior Profile:** Light Mesa embossed

**Interior Profile:** Light Mesa embossed

\*\*K-Factor calculations: Btu in/ft²·hr. °F



# ENVELOPE & ACCESSORY COMPONENTS

## ENVELOPE COMPONENTS

Metl-Span has a complete line of building envelope solution accessories to provide an efficient and visually pleasing aesthetic to any building, both new and retrofit construction.

### METL-VISION®

Metl-Span has developed the Metl-Vision® window system to further complement the exceptional architectural aesthetics and function of Metl-Span's horizontal wall panels. Metl-Vision® is the first window system engineered to integrate fully with Architectural 2" and 3" horizontal wall panels. The Metl-Vision® flush frame eliminates interface problems commonly encountered with standard windows, and minimizes sight lines to enhance finished assembly appearance. The system offers great flexibility in window size, multiple lite configurations and window-finish options.

### PANEL SPECIFICATIONS

**Window Height:** Available in increments matching standard wall panel widths of 24", 30" and 36". Custom widths and corresponding heights are available between 24" and 36".

**Window Width:** Virtually unlimited widths are obtainable using spliced head and sill members in combination with intermediate vertical muntins. Window unit jambs can be located to match with vertical wall panel joints or located away.

**Glazing Material Thickness:** Standard 1"

**Window Projection:** The frame is 4" deep and designed to fit flush with exterior panels

### FINISHES

**Anodized:** Clear, Dark Bronze, Black

**2-Coat Painted:** Custom color consisting of fluoropolymer coatings

**3-Coat Painted:** Custom color consisting of fluoropolymer coatings and clear coat

**Mill Finish:** Bare aluminum



## ACCESSORY COMPONENTS

### ALUMINUM EXTRUSIONS

Metl-Span offers specially designed extrusions for integration with insulated metal panels. Extrusions are a lightweight option that helps to reduce labor expense while providing a clean, finished appearance. Extrusions are available in multiple options and colors.

### FRP CLEANSEAM™

Metl-Span offers specially designed PVC extrusions for integration with our CleanSeam panels. The extrusions have been custom-designed to accommodate the CleanSeam panel and work with the special sealant used on the panels to protect against contamination, mold and mildew.

## LOUVERS

Metl-Span Architectural Louvers are available in a wide array of customizable options. They provide for ventilation or exhaust air, and offer defense against vision, water and noise intrusion.



## SUNSHADES

Metl-Span Architectural Sunshades by Doralco Architectural Metals filter the sun's heat, minimize glare, reduce radiant heat loss and integrate natural light into indoor spaces.



## SHELVES

Metl-Span Architectural Light Shelves by Doralco Architectural Metals reflect direct sunlight up to the ceiling, distributing it more evenly to make surfaces feel bigger and brighter.



## COLUMN COVERS & BEAM WRAPS

Metl-Span Column Covers and Beam Wraps by Doralco Architectural Metals are precision-engineered to meet virtually any architectural need, and are designed to adapt to practically any geometric configuration.



## GRILLES

Metl-Span Architectural Grilles and Screenwalls by Doralco Architectural Metals provide striking visual impact to building facades and shield unattractive equipment or construction from view, all in one energy-efficient package.



# TESTING & CERTIFICATIONS



## FM APPROVAL

Metl-Span products carry a standard FM Approval Class 1 certification. The FM Approval certification mark verifies products and services will meet stated conditions of performance, safety and quality useful to the ends of property conservation.

Approval criteria for Class 1 are observation of test sample production, performance requirements, marking requirements, examination of manufacturing facilities, audit of quality assurance procedures and a follow-up program.

This FM Approval Class 1 rating ensures your investment is a quality product that consistently performs to the standards specified.

## THIRD-PARTY CERTIFICATIONS & LISTINGS FOR CF FOAM PANELS

The panels are certified and listed by third-party agencies and tested in accordance with ASTM E84, ASTM E108, CAN/ULC S101, S102, S107, S126, S134, S138, NFPA 259, NFPA 285 and NFPA 286.

## FIRE-RESISTANCE TESTS (THERMALSAFE ONLY)

FM Approval Standard 4880 internal wall and ceiling panels, ASTM E119, CAN/ULC S101, UL 263

The ThermalSafe product offers one-, two- and three-hour fire resistance for non-load-bearing walls and a 90-minute fire-resistance rating for a non-load-bearing ceiling.

- 4" thickness offers one-hour fire resistance wall listing at UL and Intertek
- 6" thickness offers two-hour fire resistance wall listing and a 90-minute ceiling listing at Intertek
- 7" thickness offers two-hour fire resistance wall listing at UL
- 8" thickness offers three-hour fire resistance wall listing at UL and Intertek

## MIAMI DADE COUNTY NOAS

CF wall panels installed vertically or horizontally and CFR roof panels are approved to be installed in the county subject to the conditions of the published notices of acceptance.

## STATE OF FLORIDA

Metl-Span CF Series and ThermalSafe panels all have State of Florida product approval.

## CITY OF LOS ANGELES RESEARCH REPORT

## ENVIRONMENTALLY CONNECTED

Given today's emphasis on performance-driven building design and construction, Metl-Span's products offer the best solution to help optimize building efficiency for architects, contractors and owners.

Metl-Span, as part of NCI Group, Inc., leads the industry in the development of energy-efficient and cost-effective insulated metal panel systems, through UL-certified and ISO-compliant products. Our company has been dedicated to a cleaner, safer environment since our origination in 1968. As evidence of our leadership in this role, we offer an Environmental Product Declaration (EPD), which provides a detailed analysis of our products' environmental manufacturing footprint, based on an ISO-compliant Life Cycle Assessment (LCA).

Metl-Span's LCA measures the impact of our products on the environment during all phases of their life, from supply chain through the manufacturing process to product use and end of life. ISO LCA standards are applied to accurately report the products' impact on the environment.

See [metlspan.com](http://metlspan.com) for published EPD and LCA.

# DESIGN OPTIONS

## HORIZONTAL/VERTICAL

Metl-Span insulated metal panels provide you design freedom with horizontal and vertical applications. The options to create building curb appeal include panel orientation coupled with a variety of finishes, textures and colors.

## COLORS

Insulated metal panels come in a variety of standard colors to meet solar reflective requirements. For a complete list of our standard colors, please review our color chart. We also do custom colors and color matching. For more information regarding specific colors, please contact a local representative.

## FINISHES

To ensure a lasting, quality appearance, the exterior face sheet of all Metl-Span insulated metal wall, CFR and ThermalSafe® mineral wool panels are treated with a base primer, followed by a premium, full-strength 70% PVDF fluoropolymer coating as standard. A siliconized polyester coating is available in a limited palette of standard colors for projects where economy is the primary consideration. A wide variety of finishes are available. For more information, see color chart or visit [metlspan.com](http://metlspan.com).

## WARRANTY

Metl-Span insulated metal wall, CFR and ThermalSafe® mineral wool panels are guaranteed to be free from defects in material and workmanship for a period of two years from the date of substantial completion. Ensuring watertightness and/or vaportightness is a function of the installer and is not covered by the warranty from Metl-Span. Complete standard limited warranty information is available upon request.

## IN-HOUSE PRE/POST SALES SERVICES OFFERED

- Drafting/Technical Services
- Certified Installer Training
- On-Site Field Training
- Weathertight Warranties

# SINGLE SKIN PRODUCTS

## PRODUCT SPECIFICATIONS

### CONCEALED FASTENER

#### DESIGNER™ SERIES 12" FLAT WALL PANEL

**PANEL SPECIFICATIONS**

**Profile:** Flat with a 1¾" deep leg

**Width:** 12"

**Length:** 5'-0" to 30'-0"

**Exterior Face:** Smooth as standard G-90 galvanized and/or AZ-50 aluminum-zinc coated steel in 24 and 22 Ga.

**Standard Exterior:** Full-strength 70% PVDF fluoropolymer or siliconized polyester coating

**Fastening:** Concealed fastening system



#### DESIGNER™ SERIES 16" FLAT WALL PANEL

**PANEL SPECIFICATIONS**

**Profile:** Flat with a 1¾" deep leg

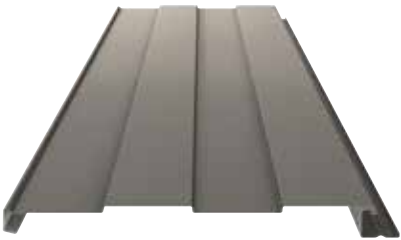
**Width:** 12"

**Length:** 5'-0" to 30'-0"

**Exterior Face:** Smooth as standard G-90 galvanized and/or AZ-50 aluminum-zinc coated steel in 24 and 22 Ga.

**Standard Exterior:** Full-strength 70% PVDF fluoropolymer or siliconized polyester coating

**Fastening:** Concealed fastening system



#### FW-120

**PANEL SPECIFICATIONS**

**Profile:** Flat with options of one bead at 6" on center or two beads, 4" apart

**Width:** 12"

**Length:** 5'-0" to 30'-0"

**Exterior Face:** Smooth as standard G-90 galvanized and/or AZ-50 aluminum-zinc coated steel in 24, 22 and 20 Ga.

**Standard Exterior:** Full-strength 70% PVDF fluoropolymer coating

**Fastening:** Concealed fastening system





---

## NUWALL® METAL PANEL

### PANEL SPECIFICATIONS

**Profile:** 2½" deep panel with ½" deep fluting

**Width:** 12"

**Length:** 5'-0" to 40'-0"

**Exterior Face:** Smooth as standard G-90 galvanized and/or AZ-50 aluminum-zinc coated steel in 24 and 22 Ga.

**Standard Exterior:** Full-strength 70% PVDF fluoropolymer coating or siliconized polyester coating

**Fastening:** Concealed fastening system



---

## ARTISAN® SERIES METAL SOFFIT PANEL

### PANEL SPECIFICATIONS

**Profile:** Flat panel

**Width:** 8", 10", 12"

**Length:** 8" and 10" panels: 4'-0" to 20'-0"; 12" panel: 4'-0"; inquire about longer lengths

**Exterior Face:** Smooth as standard G-90 galvanized and/or AZ-50 aluminum-zinc coated steel in 26, 24 and 22 Ga.

**Standard Exterior:** Full-strength 70% PVDF fluoropolymer coating or siliconized polyester coating

**Fastening:** Concealed fastening system



---

## SHADOWRIB® METAL PANEL

### PANEL SPECIFICATIONS

**Profile:** 3" deep panel with 1½" deep by 5¼" wide fluting

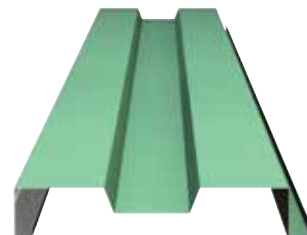
**Width:** 16"

**Length:** 5'-0" to 40'-0"

**Exterior Face:** Smooth as standard G-90 galvanized and/or AZ-50 aluminum-zinc coated steel in 24 and 22 Ga.

**Standard Exterior:** Full-strength 70% PVDF fluoropolymer coating or siliconized polyester coating

**Fastening:** Concealed fastening system



# SINGLE SKIN PRODUCTS CONTINUED

## PRODUCT SPECIFICATIONS

### EXPOSED FASTENER

#### 7.2 METAL WALL PANEL

##### PANEL SPECIFICATIONS

**Profile:** Traditional high-rib height at 7.2" on center

**Width:** 36"

**Thickness:** 2", 2½", 3", 4", 5", 6"

**Length:** 5'-0" to 50'-0"

**Exterior Face:** Smooth as standard G-90 galvanized and/or AZ-50 aluminum-zinc coated steel in 26, 24 and 22 Ga.

**Standard Exterior:** Full-strength 70% PVDF fluoropolymer coating or siliconized polyester coating

**Fastening:** Exposed fastening system



#### PBR METAL WALL PANEL

##### PANEL SPECIFICATIONS

**Profile:** 1¼" rib height at 12" on center

**Width:** 36"

**Thickness:** 2", 2½", 3", 4", 5", 6"

**Length:** 5'-0" to 50'-0"

**Exterior Face:** Smooth as standard G-90 galvanized and/or AZ-50 aluminum-zinc coated steel in 26, 24 and 22 Ga.

**Standard Exterior:** Full-strength 70% PVDF fluoropolymer coating or siliconized polyester coating

**Fastening:** Exposed fastening system



#### PBU METAL WALL PANEL

##### PANEL SPECIFICATIONS

**Profile:** ¾" rib height at 6" on center

**Width:** 36"

**Thickness:** 2", 2½", 3", 4", 5", 6"

**Length:** 5'-0" to 50'-0"

**Exterior Face:** Smooth as standard G-90 galvanized and/or AZ-50 aluminum-zinc coated steel in 26, 24 and 22 Ga.

**Standard Exterior:** Full-strength 70% PVDF fluoropolymer coating or siliconized polyester coating

**Fastening:** Exposed fastening system



---

## PBC METAL WALL PANEL

### PANEL SPECIFICATIONS

**Profile:**  $\frac{7}{8}$ " rib height at  $2\frac{2}{3}$ " on center

**Width:** 32"

**Length:** 5'-0" to 50'-0"

**Exterior Face:** Smooth as standard G-90 galvanized and/or AZ-50 aluminum-zinc coated steel in 26, 24 and 22 Ga.

**Standard Exterior:** Full-strength 70% PVDF fluoropolymer coating or siliconized polyester coating

**Fastening:** Exposed fastening system



---

## PBD METAL WALL PANEL

### PANEL SPECIFICATIONS

**Profile:**  $\frac{5}{8}$ " rib height at  $2\frac{2}{3}$ " on center

**Width:** 32"

**Length:** 5'-0" to 50'-0"

**Exterior Face:** Smooth as standard G-90 galvanized and/or AZ-50 aluminum-zinc coated steel in 26, 24 and 22 Ga.

**Standard Exterior:** Full-strength 70% PVDF fluoropolymer coating or siliconized polyester coating

**Fastening:** Exposed fastening system





**Metl-Span: Performance Redefined**  
1720 Lakepointe Drive, Suite 101, Lewisville, Texas 75057 (p) 877.585.9969 (f) 972.420.9382 [metlspan.com](http://metlspan.com)

©2016 Metl-Span - an NCI Building Systems company. All rights reserved. Printed in the U.S.A.  
PART NUMBER ICIPS0416