

# Making Buildings

## That Make Our Builders The best.



## Long Bay System

The new Long Bay® System is the first innovative steel roof framing product in over 30 years. This new system allows MESCO Building Solutions builders to compete in the conventional and tilt wall markets.

With the Long Bay System (LBS), fewer interior columns provide for large areas of open floor space. MESCO's LBS is perfect for manufacturing, warehouse/distribution, and large retail applications. The strong, lightweight framing system provides the inherent benefits of a metal building option that is superior to conventional methods.

MESCO prides itself on offering the following features for all Long Bay Systems:

- Aesthetically pleasing appearance
- Standard and custom design options
- Fast and economical construction
- Ease of expansion
- Ongoing durability
- Reduced maintenance costs
- Long-term energy savings

# Long Bay System

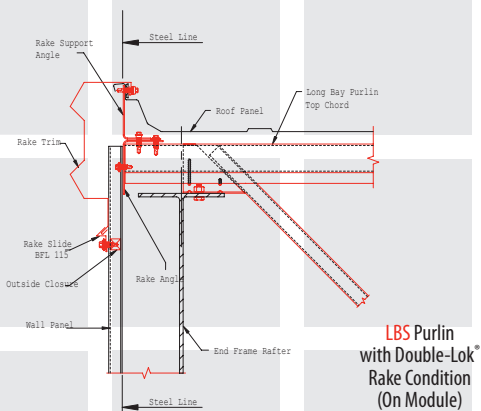
Fewer interior columns provide for large areas of open floor space. MESCO's Long Bay System is perfect for manufacturing, warehouse/distribution, and large retail applications. The strong, lightweight framing system provides the inherent benefits of a metal building option that is superior to conventional methods.

- Bay spacing up to 60 feet
- Lighter and stiffer than conventional products
- Available with a standing seam metal roof or with B Deck for Built-up or Single Ply roof
- Bolted connection to main frame
- Faster, safer and more economical erection
- Uses less bridging than on joists

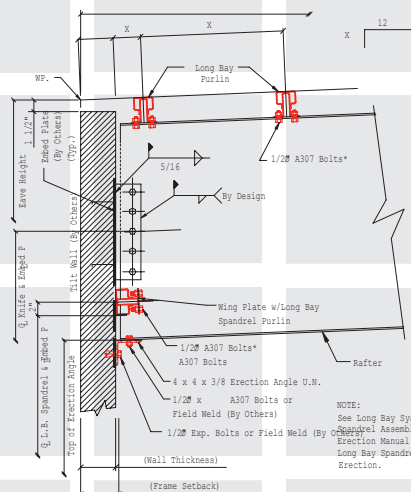


CORPORATE OFFICES  
5244 Bear Creek Ct. • Irving, TX 75061  
817-488-8511 • Fax 817-329-2326 • 1-800-556-3726  
sales-marketing@mescobuildingsolutions.com

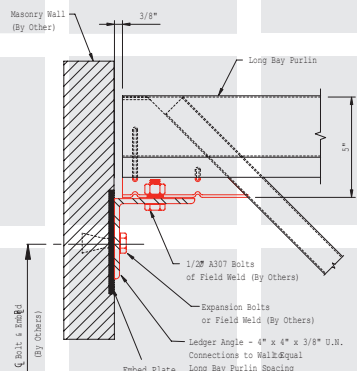
REGIONAL OFFICE  
107 Second Ave. SE • Cullman, AL 35055  
256-734-6514 • Fax 256-734-6734 • 1-866-279-9696  
sales-marketing@mescobuildingsolutions.com



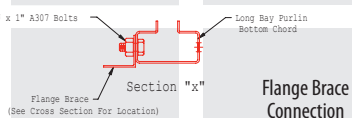
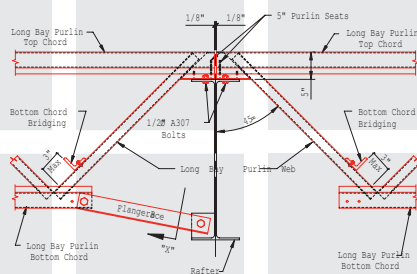
**LBS Purlin  
with Double-Lok  
Rake Condition  
(On Module)**



**LBS Spandrel  
at Main Frame  
(with Masonry Wall)**



**LBS Purlin  
at Masonry Parapet**



**Flange Brace  
Connection**